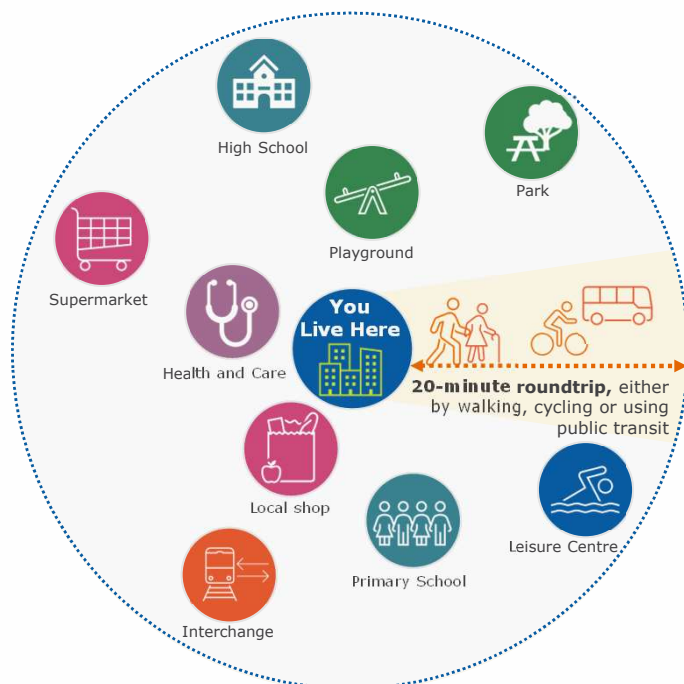




1

Mission

"Working in partnership with local communities across Edinburgh to create a network of **healthier**, **greener** and **thriving** neighbourhoods where everyone can meet most of their daily needs within a short walk, wheel or cycle from their home."



2

Strategy

Areas of Disadvantage

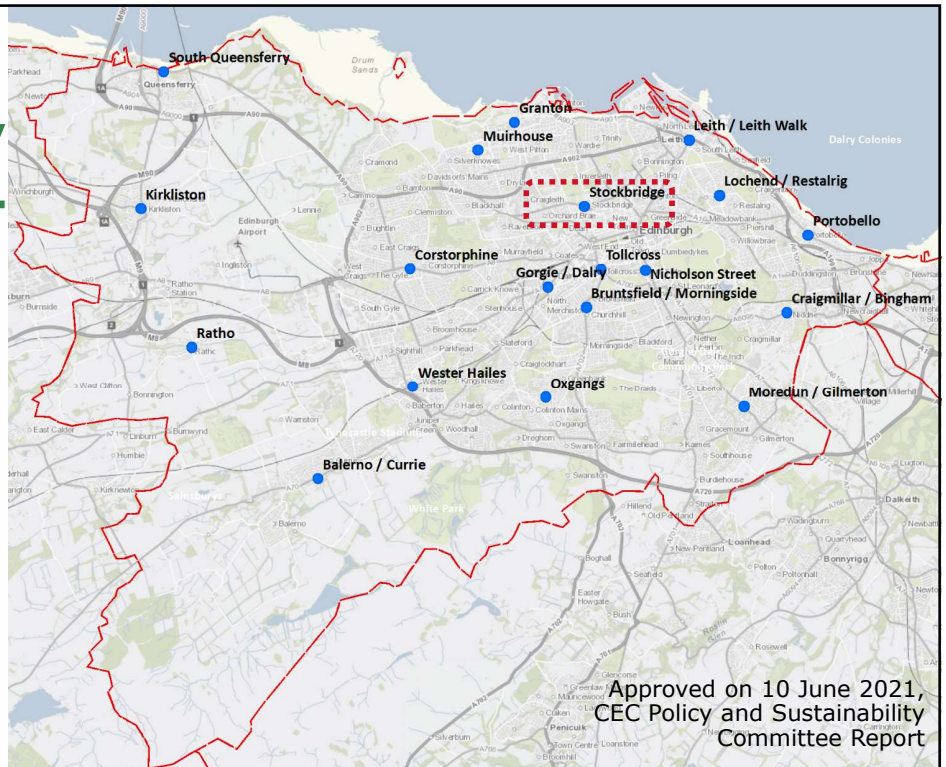
- Wester Hailes
- Craigmillar / Bingham
- Muirhouse
- Granton
- Lochend / Restalrig
- Moredun / Gilmerton
- Oxgangs

Town Centres and High Streets

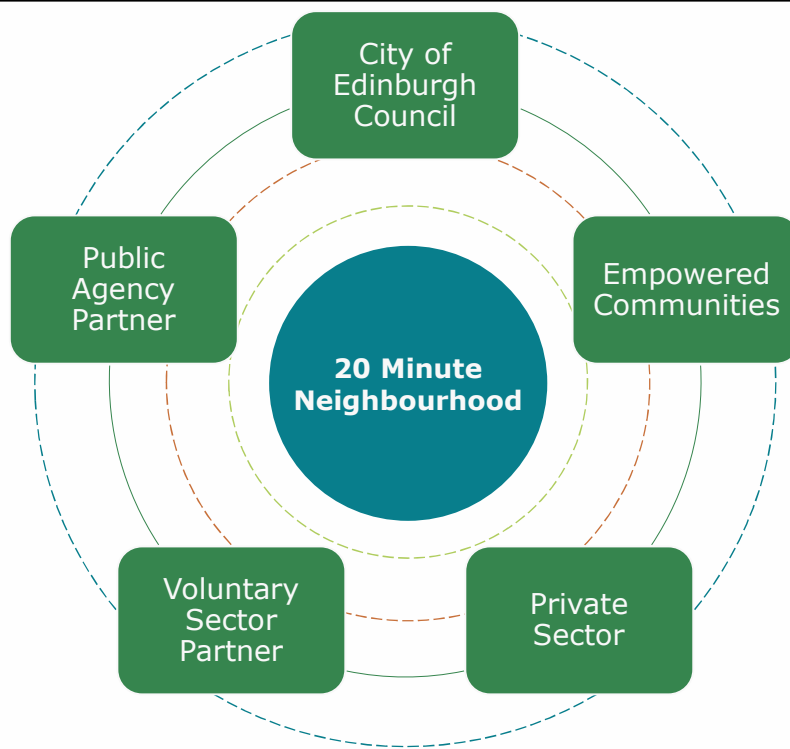
- Corstorphine
- Gorgie / Dalry
- Tollcross
- Morningside / Bruntsfield
- Stockbridge
- Nicolson Street
- Leith / Leith Walk
- Portobello

Rural

- Queensferry
- Kirkliston
- Currie / Balerno
- Ratho



3

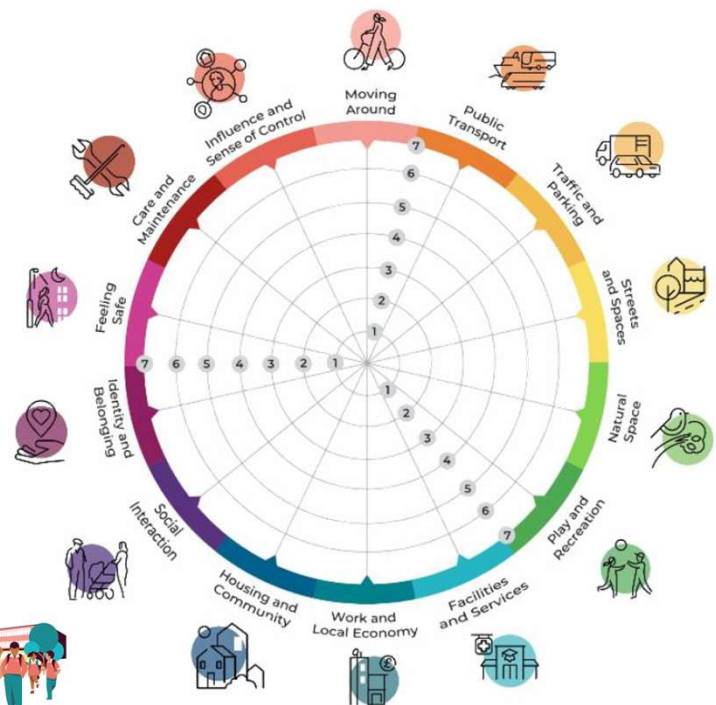


4

Place Standard

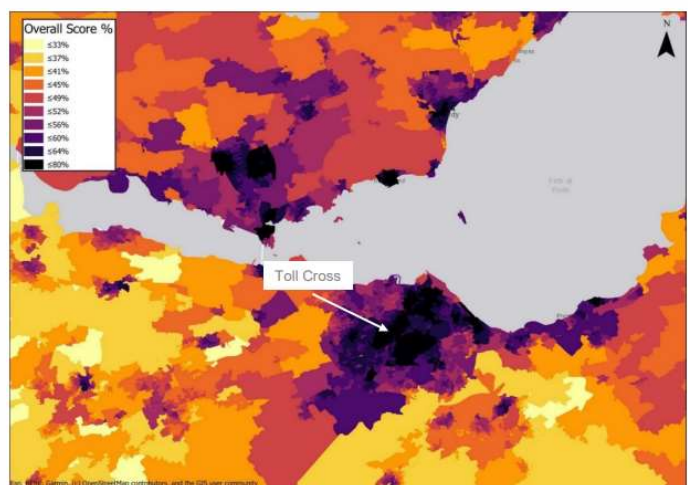
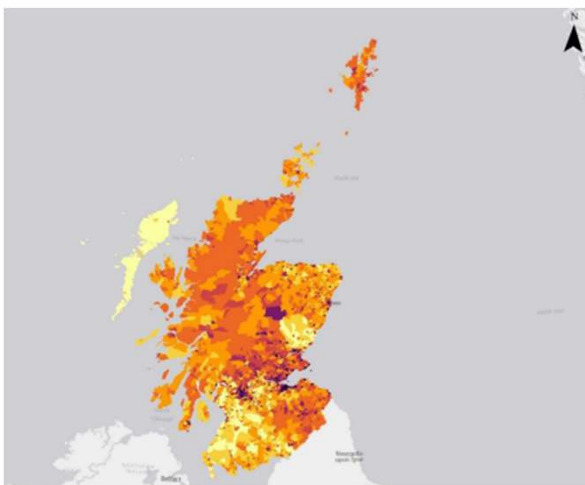
- Tool to start conversations about place, covering physical and social elements.
- Aligns with elements of a successful 20-Minute Neighbourhood.
- Trialling new versions for children, young people, and a climate lens.

What I need to live well?



5

Local Context



SOURCE: Climate Exchange, '20 Minute Neighbourhoods in a Scottish Context', 2021

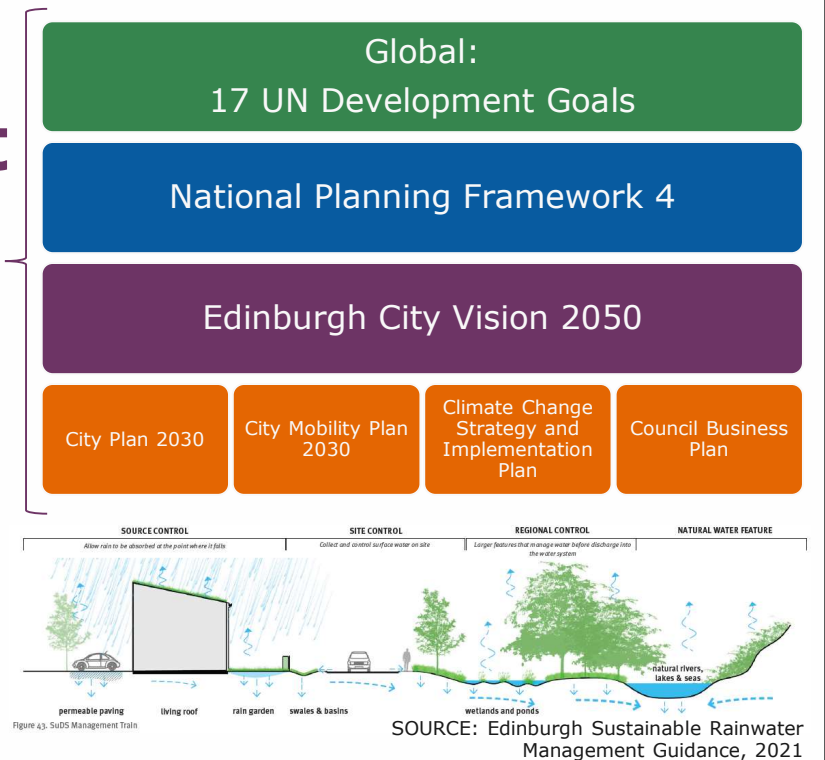
6

A key component

20-Minute Neighbourhood Strategy is part of wider local, national, and international initiatives



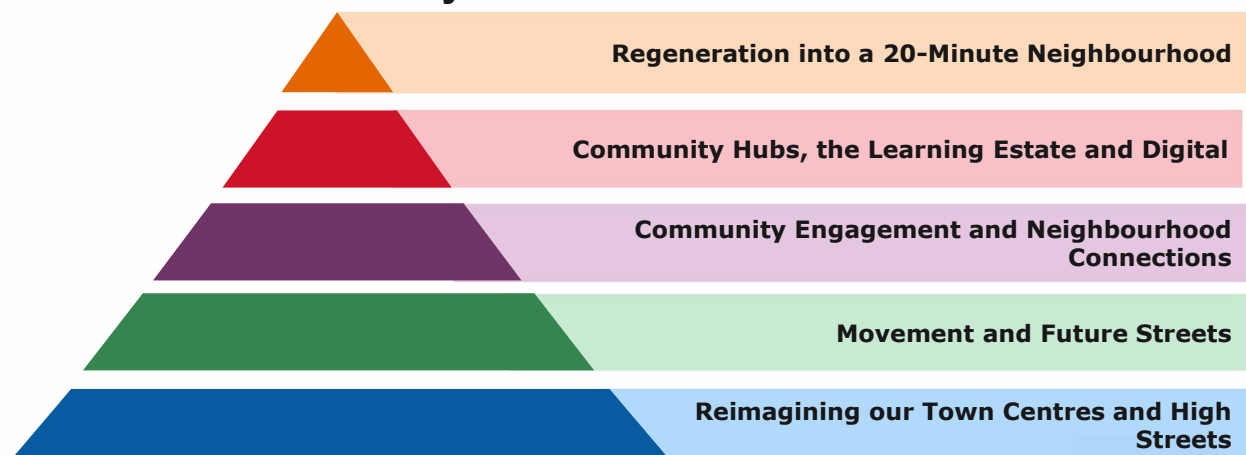
SOURCE: Edinburgh Thriving Greenspaces 2050, 2022



7

Programme

Five strands of delivery:



8

1

Regeneration into
a 20-Minute
Neighbourhood



9

2

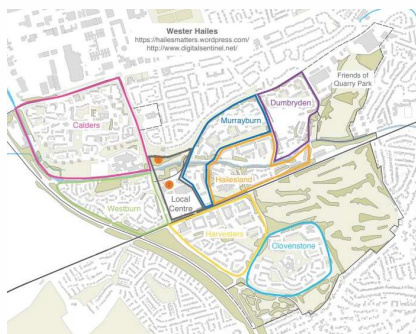
Community Hubs,
the Learning
Estate, and Digital



10

3

Community Engagement and Neighbourhood Connections



New North-South Link*:

Establish safe and direct connection from Healthy Living Centre and Rail Station through local centre.

Housing Developments:

See guidance for new developments p.60

Shopping Centre Future*:

Shopping centre should support and encourage more local businesses, respond more to local community needs, and connect better with adjacent civic spaces.

More Active Civic Space*:

Strategy for local markets and events in civic space. Change to community use in surrounding buildings.

Improve Connections:

New cycle infrastructure planned; ensure centre links in to this.

Transport*:

Establish new green transport hub. Give pedestrian priority across main road as part of new North-South link.

Alternative Housing Models*:

Explore floating accommodation along canal, away from tow-path.

Community Hub*:

Develop 'Petrol Station Site' into new hub space; linked to green spaces, growing and food.

New North-South Link*:

Pedestrian bridge across the canal to link local centre to green space.

* engagement feedback

SOURCE: Wester Hailes Local Place Plan, September 2022, Proposed Local Centre

Local Place Plans

11

4

Movement and Future Streets

2022/23:

- i. Active Travel Action Plan;
- ii. Public Transport Action Plan;
- iii. Air Quality Action Plan;
- iv. Road Safety Action Plan; and
- v. Parking Action Plan.
- vi. Our Future Streets project....



... "a strategic approach to allocate street space between different travel modes".

12

5

Our vision is to reimagine town centres as more 'liveable' places, with improved walking, wheeling, cycling and public transport connectivity from neighbouring communities.

Reimagining Town Centres and High Streets

The 20-minute Neighbourhood team:

- i. leads on strategic and concept design plans for town centres; and
- ii. coordinates with local community and business stakeholders.

Work has started in Gorgie / Dalry and Portobello.



SOURCE: Public Street Life Assessment, Bruntsfield + Morningside, Parking Bays + Bus Stop in front of M&S / Superdrug on Morningside Road (proposed visualisation)

13

20minute neighbourhood

Thank you

20minuteneighbourhood@edinburgh.gov.uk

14