

## Edinburgh and South East Regional Claimant Count September 2024 Summary Update

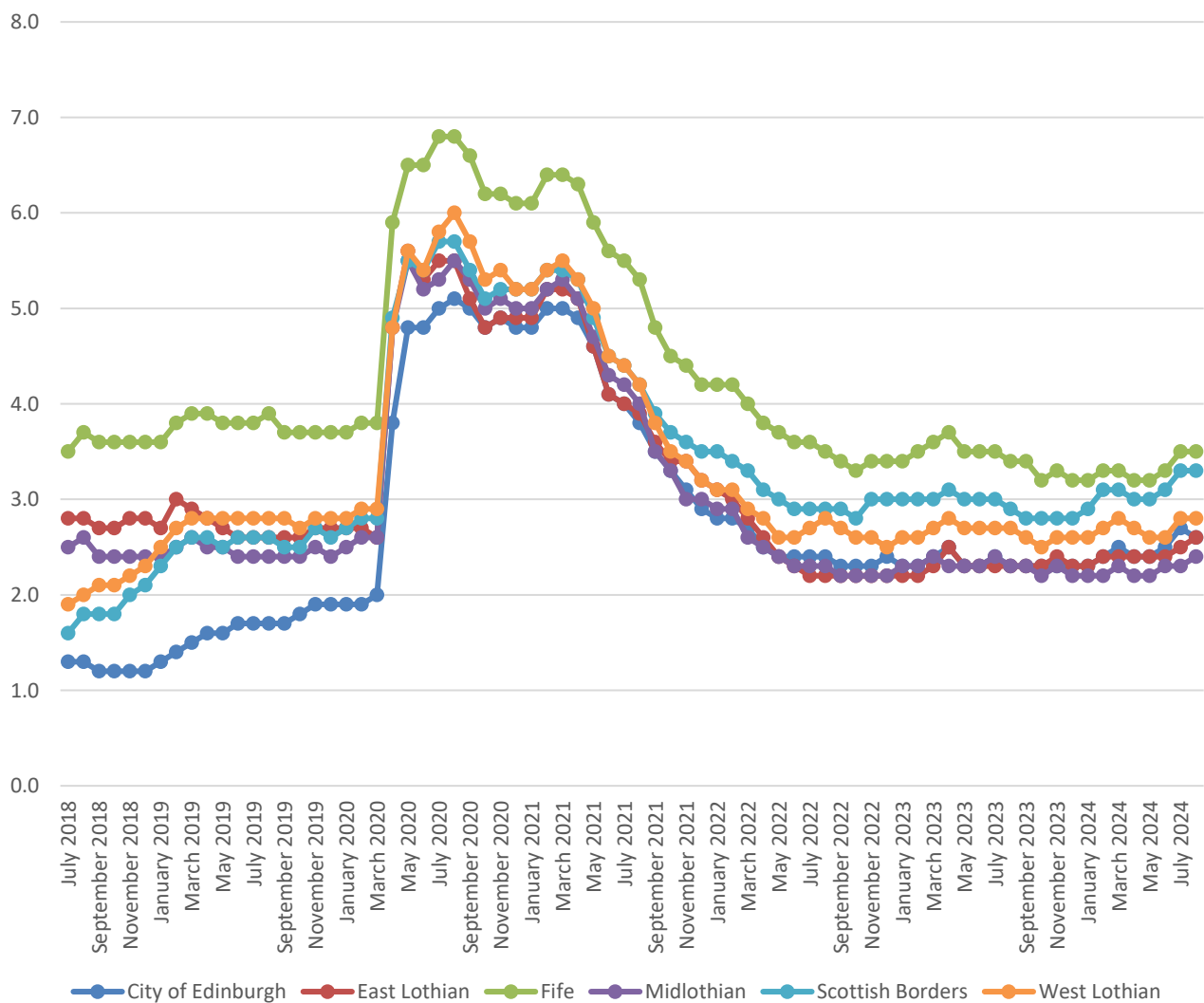
### Claimant Count Change Between August 2023 and August 2024:

- ↑ UK increased by 17.3%
- ↑ Scotland increased by 7.0%
- ↑ Edinburgh increased by 12.9%
- ↑ City Region increased by 8.0%

### Claimant Count Change Between July 2024 and August 2024:

- ↑ UK increased by 0.9%
- ↑ Scotland increased by 1.5%
- ↑ Edinburgh increased by 1.1%
- ↑ City Region increased by 0.9%

**Figure 1 Claimant Rate Across the City Region Since July 2018**



Source: NOMIS 10/09/2024

### City Region Summary

1. In August 2024 the claimant count for the City Region was 26,370 (in July it was 26,145). Of these
  - a. 4,625 were 16-24 year olds up from 4,510 in July.
  - b. 15,825 were 25-49 year olds the same as in July.
  - c. 5,940 were 50 or older up from 5,810 in July.
2. In July 2024 there were 48,253 working individuals claiming Universal Credit in the Region. In June 2024 there were 48,867.

### Edinburgh Summary

1. In August 2024 the claimant count for Edinburgh was 9,640 (in July it was 9,535). Of these
  - a. 1,310 were 16-24 year olds. It was 1,320 in July.
  - b. 6,140 were 25-49 year olds. It was 6,080 in July.
  - c. 2,195 were 50 or older. It was 2,135 in July.
2. In July 2024 there were 15,135 working individuals claiming Universal Credit in Edinburgh. In June 2024 there were 15,437.

### East Lothian Summary

1. In August 2024 the claimant count for East Lothian was 1,720 (in July it was 1,670). Of these
  - a. 300 were 16-24 year olds. In July there were 290.
  - b. 1,010 were 25-49 year olds. In July there were 990.
  - c. 410 were 50 or older. In July there were 390.
2. In July 2024 there were 3,757 working individuals claiming Universal Credit in East Lothian. In June 2024 there were 3,881.

### Fife Summary

1. In August 2024 the claimant count for Fife was 8,135 (in July it was 8,040). Of these
  - a. 1,700 were 16-24 year olds. In July there were 1,630.
  - b. 4,660 were 25-49 years of age. In July there were 4,665.
  - c. 1,780 were 50 or older. In July there were 1,745.
2. In July 2024 there were 14,550 working individuals claiming Universal Credit in Fife. In June 2024 there were 14,554.

### Midlothian Summary

1. In August 2024 the claimant count for Midlothian was 1,390 (it was 1,395 in July). Of these
  - a. 270 were 16-24 year olds. In July it was 245.
  - b. 860 were 25-49 year olds. In July it was 890.
  - c. 265 were 50 or older. In July it was 260.
2. In July 2024 there were 3,611 working individuals claiming Universal Credit in Midlothian. In June there were 3,636.

### Scottish Borders Summary

1. In August 2024 the claimant count for Scottish Borders was 2,205 (in July it was 2,190). Of these
  - a. 385 were 16-24 year olds. In July it was 380.
  - b. 1,185 were 25-49 year olds. In July there were 1,185.
  - c. 635 were 50 or older. In July there were 625.
2. In July 2024 there were 4,023 working individuals claiming Universal Credit in Scottish Borders. In June there were 4,106.

### West Lothian Summary

1. In August 2024 the claimant count for West Lothian was 3,280 (in July it was 3,315). Of these
  - a. 660 were 16-24 year olds. In July there were 645.
  - b. 1,970 were 25-49 year olds. In July there were 2,015.
  - c. 655 were 50 or older. In July there were 655.
2. In July 2024 there were 7,177 West Lothian individuals claiming Universal Credit who were in work. In June there were 7,253.

## Edinburgh and South East Regional Claimant Count September 2024 Full Update

### Claimant Count by Nation and Region

Table 1 indicates that in the UK the claimant count in August 2024 is higher than it was five years ago. This is the same in every region and nation apart from the North East of England where it is almost the same (0.1% lower) than five years ago. In Scotland it is 4.3% higher than in August 2019 and in the UK, it is 54.2% higher. We can also see that in all the regions and countries of the UK the claimant count in August 2024 is higher than it was in August 2023. In Scotland the claimant count is 7.0% higher than it was a year ago.

**Table 1: National Claimant Count Picture**

	August 2019	August 2023	July 2024	August 2024	Percentage Change		
					Aug19 - Aug24	Aug23- Aug24	Jul24 - Aug24
UK	1,163,945	1,529,745	1,777,620	1,794,405	54.2%	17.3%	0.9%
East	79,755	113,590	134,575	136,205	70.8%	19.9%	1.2%
East Midlands	73,170	100,065	116,050	116,565	59.3%	16.5%	0.4%
London	170,330	291,805	354,275	356,725	109.4%	22.2%	0.7%
North East	71,580	66,145	71,225	71,515	-0.1%	8.1%	0.4%
North West	158,320	191,300	219,955	221,295	39.8%	15.7%	0.6%
N. Ireland	29,590	36,795	41,090	42,665	44.2%	16.0%	3.8%
Scotland	112,310	109,505	115,510	117,185	4.3%	7.0%	1.5%
South East	104,990	160,875	184,925	186,900	78.0%	16.2%	1.1%
South West	68,800	85,020	99,935	100,150	45.6%	17.8%	0.2%
Wales	56,770	60,445	68,760	68,610	20.9%	13.5%	-0.2%
West Midlands	131,620	177,570	209,865	213,625	62.3%	20.3%	1.8%
Yorks & Humb	106,715	136,635	161,455	162,950	52.7%	19.3%	0.9%

**Source: NOMIS 10/9/2024**

Looking at the latest month to month change it can be seen in the table that across the UK the claimant count is 0.9% higher in than in July- increasing by over 16,785 in the last month. In Scotland it is 1.5% higher (1,675) in August 2024 than it was in July. Generally speaking, whilst we have seen an increase in the claimants over the last month everywhere apart from Wales these July to August changes are of a lower magnitude than we saw between June and July. This could be due to changes in the labour market OR it could be linked to the conditionality changes introduced in May by DWP having worked through the system. These changes were thought to is likely affect around 180,000 claimants across the UK over a period of around 6 months, increasing the Claimant Count over that time.<sup>1</sup>

<sup>1</sup>

## Claimant Count by Scottish Local Authority

Table 2 focuses on Scottish Local Authorities. We can see that 13 Scottish Local Authorities have a claimant count higher in August 2024 than was recorded in August 2019. Every Local Authority in the City Region, except for West Lothian and Fife, has more claimants in August 2024 than they had in August 2019. It tends to be cities and areas where the claimant count was low in 2019 that are likely to fall into this category and that can be seen when you look at the picture across the UK as well as in Scotland.

**Table 2: Claimant Count - Scottish Local Authorities**

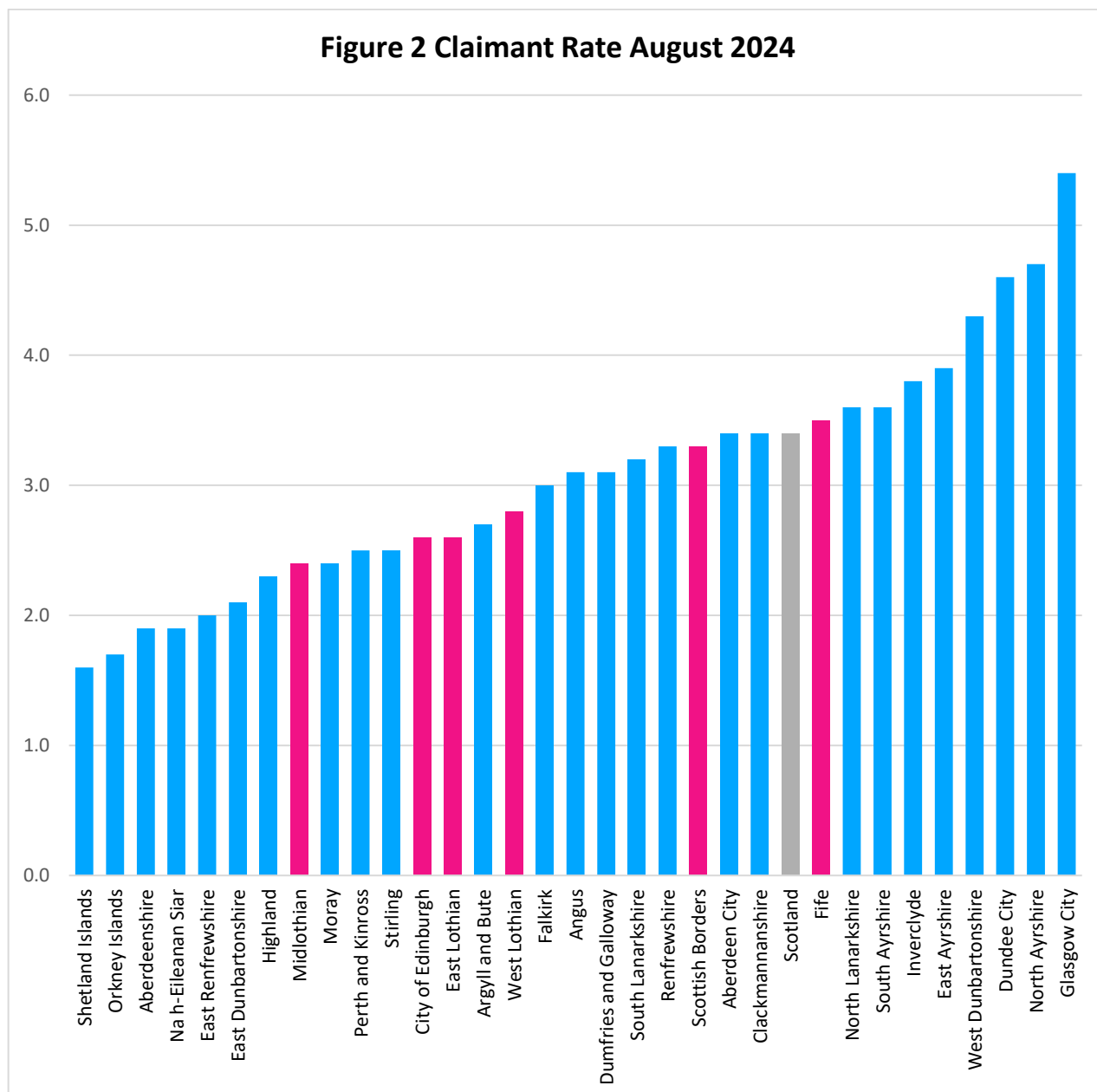
	August 2019	August 2023	July 2024	August 2024	Percentage Change		
					Aug19 - Aug24	Aug23- Aug24	Jul24 - Aug24
Aberdeen City	3,830	4,875	5,080	5,230	36.6%	7.3%	3.0%
Aberdeenshire	2,820	2,890	2,975	3,125	10.8%	8.1%	5.0%
Angus	2,255	2,010	2,070	2,120	-6.0%	5.5%	2.4%
Argyll and Bute	1,380	1,315	1,350	1,370	-0.7%	4.2%	1.5%
Edinburgh	6,375	8,535	9,535	9,640	51.2%	12.9%	1.1%
Clackmannanshire	1,380	1,175	1,105	1,100	-20.3%	-6.4%	-0.5%
Dumfries & Galloway	2,770	2,455	2,670	2,670	-3.6%	8.8%	0.0%
Dundee City	4,835	4,275	4,380	4,510	-6.7%	5.5%	3.0%
East Ayrshire	3,830	3,060	2,975	2,980	-22.2%	-2.6%	0.2%
E.Dunbartonshire	1,270	1,275	1,315	1,360	7.1%	6.7%	3.4%
East Lothian	1,700	1,530	1,670	1,720	1.2%	12.4%	3.0%
East Renfrewshire	990	1,025	1,135	1,160	17.2%	13.2%	2.2%
Falkirk	3,310	3,010	3,070	3,050	-7.9%	1.3%	-0.7%
Fife	9,005	7,820	8,040	8,135	-9.7%	4.0%	1.2%
Glasgow City	19,145	21,200	23,680	24,175	26.3%	14.0%	2.1%
Highland	3,370	3,140	3,360	3,340	-0.9%	6.4%	-0.6%
Inverclyde	2,405	1,840	1,790	1,805	-24.9%	-1.9%	0.8%
Midlothian	1,380	1,345	1,395	1,390	0.7%	3.3%	-0.4%
Moray	1,495	1,290	1,320	1,385	-7.4%	7.4%	4.9%
Na h-Eileanan Siar	335	280	280	295	-11.9%	5.4%	5.4%
North Ayrshire	4,660	3,650	3,740	3,805	-18.3%	4.2%	1.7%
North Lanarkshire	8,500	7,475	7,720	7,945	-6.5%	6.3%	2.9%
Orkney Islands	165	210	235	225	36.4%	7.1%	-4.3%
Perth and Kinross	1,825	2,260	2,230	2,300	26.0%	1.8%	3.1%
Renfrewshire	4,025	3,755	3,890	3,840	-4.6%	2.3%	-1.3%
Scottish Borders	1,775	1,985	2,190	2,205	24.2%	11.1%	0.7%
Shetland Islands	220	205	240	225	2.3%	9.8%	-6.3%
South Ayrshire	2,650	2,265	2,415	2,395	-9.6%	5.7%	-0.8%
South Lanarkshire	7,050	6,230	6,440	6,525	-7.4%	4.7%	1.3%
Stirling	1,455	1,455	1,495	1,480	1.7%	1.7%	-1.0%
W.Dunbartonshire	2,775	2,470	2,405	2,405	-13.3%	-2.6%	0.0%
West Lothian	3,320	3,195	3,315	3,280	-1.2%	2.7%	-1.1%
Scotland	112,310	109,505	115,510	117,185	4.3%	7.0%	1.5%
City Region	23,555	24,410	26,145	26,370	12.0%	8.0%	0.9%

**Source: NOMIS 10/9/2024**

Over the last year four Local Authorities saw the claimant count fall and all the others saw the claimant count increase year on year. This ranged from a rise of 1.3% in Falkirk through to a 14% increase in Glasgow City. One factor to consider is that this 12 month period includes the DWP

conditionality changes which are very likely to be behind at least some of this increase. What we can also see in Table 2 is that the change between July and August is slightly more positive with ten Local Authorities recording a month to month fall and two seeing no change.

Figure 2, below, looks at the claimant rate for all the Scottish Local Authorities as recorded in August 2024. From this it can be seen that, except for Fife, all the City Region Local Authorities had a claimant rate below the Scottish average. For Midlothian the claimant rate is low enough to place it within the ten Local Authorities with the lowest claimant rate in the country.



**Source: NOMIS 10/9/2024**

### City Region Position

Looking in more detail at the position in the City Region. It can be seen in Table 3 that across the region the claimant count recorded in August 2024 is higher than it was in August 2023. Mid and West Lothian are the two Local Authorities where the year on year change is less marked. Again, the changes in the compilation of the statistics with the conditionality arrangements altering could have played a part in the increase year on year.

The month-to-month change from July 2024 to August 2024 indicates that in all but two Local Authorities the claimant count is higher than it was month ago. Midlothian saw it fall by 0.4% from 1,395 claimants in July to 1,390 in August and West Lothian saw it fall from 3,315 to 3,280 – a fall of 1.1%.

**Table 3: Claimant Count – City Region LAs**

All	August 2023	July 2024	August 2024	Aug 2024 Claimant Rate	% Change	
					Aug23-Aug24	Jul24 - Aug24
Edinburgh	8,535	9,535	9,640	2.6	12.9%	1.1%
East Lothian	1,530	1,670	1,720	2.6	12.4%	3.0%
Fife	7,820	8,040	8,135	3.5	4.0%	1.2%
Midlothian	1,345	1,395	1,390	2.4	3.3%	-0.4%
Scottish Borders	1,985	2,190	2,205	3.3	11.1%	0.7%
West Lothian	3,195	3,315	3,280	2.8	2.7%	-1.1%
City Region	24,410	26,145	26,370	2.9	8.0%	0.9%

**Source: NOMIS 10/9/2024**

The data presented in Table 4 indicates that across the region in July 2023 there were 43,076 people who were in work but required financial support from Universal Credit (UC) as their income was not sufficient. In July 2024 this had increased by 12% to 48,235. Over the last month (June to July 2024) there has been a decrease of 1.3% in the region with around 600 fewer people working and claiming Universal Credit.

**Table 4 Universal Credit Claimants in Employment**

	Jul-23	Jun-24	Jul-24	Jul23 to July 24	June24 to July 24
City of Edinburgh	13,725	15,437	15,135	10.3%	-2.0%
East Lothian	3514	3881	3757	6.9%	-3.2%
Fife	12,972	14,554	14,550	12.2%	0.0%
Midlothian	3,220	3,636	3,611	12.1%	-0.7%
West Lothian	6,162	7,253	7,177	16.5%	-1.0%
Scottish Borders	3,483	4,106	4,023	15.5%	-2.0%
Total	43,076	48,867	48,253	12.0%	-1.3%

**Source: StatXplore 11/09/2024**

## Gender Profile

From Table 5 we can see that one Local Authority in the city region has seen the number of male claimants fall over the last 12 months and the other five have seen the number increase. Across the region the number of male claimants in August 2024 was 410 higher than in August 2023.

**Table 5: Change in Male Claimant Count Across the City Region**

	August 2023	July 2024	August 2024		% Change	
			Claimant Count	Rate	Aug23-Aug24	Jul24 - Aug24
Edinburgh	5,015	5,385	5,445	3.0	8.6%	1.1%
East Lothian	880	900	915	2.8	4.0%	1.7%
Fife	4,680	4,480	4,555	4.0	-2.7%	1.7%
Midlothian	755	750	765	2.7	1.3%	2.0%
Scottish Borders	1,120	1,175	1,175	3.6	4.9%	0.0%
West Lothian	1,805	1,815	1,810	3.1	0.3%	-0.3%
City Region	14,255	14,505	14,665	3.3	2.9%	1.1%

**Source: NOMIS 10/9/2024**

Comparing the August 2024 statistics to those of July 2024 the picture is less positive as all but one Local Authority (West Lothian) saw the number of male claimants increase. This culminated in the region as a whole recording a 1.1% increase between July and August 2024.

Table 5 also reflects the claimant rate in August for males in each of the six Local Authorities. This is arrived at by dividing the claimant count by the working age population. From this we can see that for Male claimants Midlothian had the lowest claimant rate and Fife had the highest.

Table 6 looks at the situation for female claimants. This indicates that over the last year there has been an increase in the number of female claimants (1,550 additional female claimants). Compare this to the male claimant count which had increased by around 400 over the same period. This is an increase of 15.3% year on year compared to an increase of 2.9% year on year for the number of male claimants.

**Table 6: Change in Female Claimant Count Across the City Region**

	August 2023	July 2024	August 2024		% Change	
			Claimant Count	Claimant Rate	Aug23-Aug24	Jul24 - Aug24
Edinburgh	3,520	4,145	4,195	2.3	19.2%	1.2%
East Lothian	650	765	805	2.3	23.8%	5.2%
Fife	3,140	3,555	3,580	3.0	14.0%	0.7%
Midlothian	590	645	625	2.1	5.9%	-3.1%
Scottish Borders	865	1,015	1,030	3.0	19.1%	1.5%
West Lothian	1,390	1,500	1,470	2.4	5.8%	-2.0%
City Region	10,155	11,625	11,705	2.5	15.3%	0.7%

**Source: NOMIS 10/9/2024**

Between July 2024 and August 2024, the number of female claimants increased in four of the six Local Authorities leading to the region recording 80 additional female claimants in August compared to July.

We can see in the table that the claimant rate for females is more similar across the region than it is for males with Midlothian recording a claimant rate of 2.1 and Fife and Scottish Borders recoding a rate of 3.0. In August 2019 across the region as a whole 39% of out of work claimants were female in August 2024 44% of claimants were female.

Table 7 below looks at the gender split of those who are in work and claiming Universal Credit. The data indicates that across the City Region in July 2023, 27,356 female claimants were in work and claiming Universal Credit. In July 2024 the number had increased to 31,426. This is over 4,000 more than 12 months ago. Compare this to the male in work Universal Credit claimant count, which was 15,722 in July 2023 and currently (July 2024) is sitting at 16,834- approximately 1,000 more. One positive is that between June and July 2024 there has been a fall in the number of both male and female claimants.

Table 7 shows that across the region, and in each Local Authority, there are a far higher proportion of women who are in work, but their earnings are so low that they qualify for in work Universal Credit. In July 2023 males comprised 36% of Universal Credit claimants whilst in July 2024 this was 35%. So consistently around 2/3<sup>rd</sup>s of in work Universal Credit claimants are female across the region and is similar across the region with Midlothian recording 67% of in work Universal Credit claimants in August were female whilst Edinburgh data indicates that 62% of claimants are female.

**Table 7: In Work Universal Credit Claimants**

		Jul-23	Jun-24	Jul-24
Edinburgh	Female	8,203	9,628	9,444
	Male	5,523	5,804	5,690
East Lothian	Female	2,384	2,603	2,523
	Male	1,132	1,276	1,228
Fife	Female	8,336	9,594	9,593
	Male	4,633	4,963	4,961
Midlothian	Female	2,170	2,467	2,446
	Male	1,051	1,168	1,163
West Lothian	Female	4,057	4,867	4,835
	Male	2,104	2,385	2,340
Scottish Borders	Female	2,205	2,639	2,576
	Male	1,276	1,469	1,445
Total	Female	27,356	31,806	31,426
	Male	15,722	17,063	16,834

**Source: StatXplore 11/9/2024**

## Age Profile

### 16-24 Year Olds

In August 2024 there were 4,625 claimants aged between 16-24 years of age in the City Region. This is 2.5% higher than a month ago and 1.6% higher than a year ago. In numerical terms the City Region has 75 more 16-24 year olds claiming than a year ago and just 115 more than last month. Worth highlighting is the fact that there are 260 fewer claimants aged 16-24 than there was the case in August 2019.

**Table 8: Change in Claimants by Age Across the City Region (All Gender)**

16-24 Year Olds	Edinburgh	East Lothian	Fife	Midlothian	Scottish Borders	West Lothian	City Region
August 2019	1,070	310	2,010	320	420	755	4,885
August 2023	1,255	325	1,640	265	370	695	4,550
July 2024	1,320	290	1,630	245	380	645	4,510
August 2024	1,310	300	1,700	270	385	660	4,625
% Change							
Aug23-Aug24	4.4%	-7.7%	3.7%	1.9%	4.1%	-5.0%	1.6%
Jul24 - Aug24	-0.8%	3.4%	4.3%	10.2%	1.3%	2.3%	2.5%

**Source: NOMIS 10/9/2024**

Looking at the different Local Authorities Edinburgh, Fife Midlothian and Scottish Borders have more 16-24 year old claimants than a year ago and all bar Edinburgh have more 16-24 year old claimants than last month.

### 25-49 Year Olds

In August 2024 there were 15,825 claimants aged between 25-49 years of age in the City Region. This is the same as a month ago and 9% higher than a year ago. In numerical terms the City Region has 1,310 more 25-49 year olds claiming than a year ago. We can also see that there are 2,555 more 25-49 year olds claiming in the City Region than in August 2019.

Looking at the different Local Authorities all six Local Authorities have more 25-49 year old claimants than a year ago while only two Local Authorities have more claimants in this age group than a month ago.



**Table 9: Change in Claimants by Age Across the City Region (All Gender)**

25-49 Year Olds	Edinburgh	East Lothian	Fife	Midlothian	Scottish Borders	West Lothian	City Region
August 2019	3,715	965	5,005	790	905	1,890	13,270
August 2023	5,395	875	4,475	820	1,085	1,865	14,515
July 2024	6,080	990	4,665	890	1,185	2,015	15,825
August 2024	6,140	1,010	4,660	860	1,185	1,970	15,825
% Change							
Aug23-Aug24	13.8%	15.4%	4.1%	4.9%	9.2%	5.6%	9.0%
Jul24 - Aug24	1.0%	2.0%	-0.1%	-3.4%	0.0%	-2.2%	0.0%

**Source: NOMIS 10/9/2024**

### 50 Year Olds and Over

In August 2024 there were 5,940 claimants aged over 50 years of age in the City Region. This is 2.2% higher than a month ago and 11% higher than a year ago. In numerical terms the City Region has 590 more people over the age of 50 claiming than a year ago and 130 more than last month.

**Table 10: Change in Claimants by Age Across the City Region (All Gender)**

50 years and over	Edinburgh	East Lothian	Fife	Midlothian	Scottish Borders	West Lothian	City Region
August 2019	1,590	950	1,995	270	450	755	6,010
August 2023	1,885	335	1,705	260	535	630	5,350
July 2024	2,135	390	1,745	260	625	655	5,810
August 2024	2,195	410	1,780	265	635	655	5,940
% Change							
Aug23-Aug24	16.4%	22.4%	4.4%	1.9%	18.7%	4.0%	11.0%
Jul24 - Aug24	2.8%	5.1%	2.0%	1.9%	1.6%	0.0%	2.2%

**Source: NOMIS 10/9/2024**

Looking at the different Local Authorities all six Local Authorities have more 50 plus claimants than were recorded a year ago and all bar one have more than a month ago. West Lothian has the same number of claimants over the age of 50 as last month.

## Ward Profile

### Edinburgh

Table 11 gives the current situation in the seventeen Edinburgh wards, the percentage change over the last twelve months and the change recorded between July and August 2024. As we can see in this table, there has been a considerable rise over the last year which *could* be linked to changes in the way the data is collated.

Overall, there are 9,640 claimants in Edinburgh in August 2024, and this is 12.9% higher than August 2023 and 1.1% higher than in July 2024. From the table we can see that in August 2024 five wards had 750 or more claimants, ten wards had more than 500 and 1 ward had less than 200.

The table also indicates that one ward had a claimant count lower in August 2024 than a year ago (Corstorphine and Murrayfield) whilst in Morningside ward the claimant count in August 2024 is the same as it was a year ago. In all other wards the claimant count is higher than a year ago. This ranges from 40.5% higher in Colinton and Farmilehead to 1.4% higher in Leith. Comparing the count recorded in July to that of August we can see that ten wards have recorded a month to month increase, six have recorded a month to month fall and one (Almond) recorded no change between

July and August 2024. We can see that the claimant rate was highest in Forth 4.3% of residents aged 16-64 were claiming and lowest in Morningside.

**Table 11 Edinburgh Claimant Count by Ward August 2024**

Wards	August 2024	Rate	% Change		Proportion of Claimants August 2024				
			Aug23 to Aug24	Jul24 to Aug24	Male	Female	Aged 16-24	Aged 25-49	Aged 50+
Almond	610	2.7	11.9%	0.0%	54.1%	45.9%	13.1%	63.9%	22.1%
City Centre	745	2.7	20.2%	4.9%	69.1%	31.5%	14.8%	63.8%	21.5%
Colinton/ Fairmilehead	295	1.9	40.5%	7.3%	50.8%	47.5%	16.9%	57.6%	25.4%
Corstorphine/ Murrayfield	145	1.0	-6.5%	-3.3%	55.2%	44.8%	10.3%	65.5%	27.6%
Craightonny/ Duddingston	645	3.1	9.3%	-1.5%	57.4%	42.6%	9.3%	67.4%	22.5%
Drum Brae/Gyle	345	2.2	21.1%	3.0%	50.7%	47.8%	11.6%	63.8%	23.2%
Forth	935	4.3	12.0%	2.7%	51.3%	48.7%	11.2%	64.7%	24.1%
Fountainbridge/ Craiglockhart	325	1.9	18.2%	4.8%	61.5%	36.9%	15.4%	63.1%	21.5%
Inverleith	345	1.5	9.5%	3.0%	49.3%	50.7%	10.1%	68.1%	21.7%
Leith	720	3.9	1.4%	0.7%	58.3%	41.7%	10.4%	68.8%	20.8%
Leith Walk	670	2.3	3.1%	-2.2%	56.7%	43.3%	11.9%	64.9%	23.9%
Liberton/Gilmerton	840	3.6	23.5%	0.6%	54.8%	45.2%	14.9%	63.7%	21.4%
Morningside	210	0.9	0.0%	-2.3%	57.1%	42.9%	9.5%	57.1%	31.0%
Pentland Hills	820	3.9	13.9%	-0.6%	55.5%	43.9%	17.7%	61.6%	20.7%
Portobello/Craigmillar	855	4.1	21.3%	1.8%	51.5%	48.5%	15.2%	62.6%	22.8%
Sighthill/Gorgie	755	3.0	7.1%	2.7%	61.6%	38.4%	17.9%	62.3%	20.5%
Southside/Newington	385	1.3	18.5%	-2.5%	61.0%	39.0%	14.3%	57.1%	28.6%
Column Total	9,640	2.6	12.9%	1.1%	56.5%	43.5%	13.6%	63.7%	22.8%

**Source: NOMIS 10/9/2024**

Overall, in Edinburgh in August 2024, 56.5% of claimants were male and 13.6% are aged 16-24. The City Centre ward records that 69.1% of the claimants are male. Inverleith has the highest proportion of female claimants at 50.7%. In Morningside 31% of claimants in August were over 50 years of age, the highest proportion in the city and in Sighthill/Gorgie 17.9% of claimants were 16-24 years of age.

Table 12 below looks at the in-work Universal Credit claimant count for the Edinburgh wards. This indicates that there are 15,135 people in the city who are working but their earnings are low enough that they can receive Universal Credit. This is 10.3% higher than it was a year ago but lower than it was last month. Overall, every ward apart from the City Centre ward has seen the number fall between June and July.

**Table 12 In Work Universal Credit Claimant Count by Edinburgh Ward July 2024**

	Jul-23	Jun-24	Jul-24	Jul 23 to Jul 24	Jun 24 to Jul 24
Almond	1,014	1,306	1,294	27.6%	-0.9%
City Centre	564	571	575	2.0%	0.7%
Colinton/Fairmilehead	437	523	510	16.7%	-2.5%
Corstorphine/Murrayfield	284	329	324	14.1%	-1.5%
Craightonny/Duddingston	887	964	958	8.0%	-0.6%
Drum Brae/Gyle	552	640	630	14.1%	-1.6%
Forth	1,493	1,618	1,584	6.1%	-2.1%
Fountainbridge/Craiglockhart	389	442	433	11.3%	-2.0%
Inverleith	464	547	512	10.3%	-6.4%
Leith	1,091	1,133	1,085	-0.5%	-4.2%

Leith Walk	929	993	985	6.0%	-0.8%
Liberton/Gilmerton	1,261	1,527	1,497	18.7%	-2.0%
Morningside	257	259	251	-2.3%	-3.1%
Pentland Hills	1,229	1,317	1,293	5.2%	-1.8%
Portobello/Craigmillar	1,317	1,544	1,507	14.4%	-2.4%
Sighthill/Gorgie	1,179	1,298	1,287	9.2%	-0.8%
Southside/Newington	375	418	403	7.5%	-3.6%
Total	13,725	15,437	15,135	10.3%	-2.0%

**Source: StatXplore 11/9/2024**

### East Lothian

Table 13 gives the current situation in the six East Lothian wards, the percentage change over the last twelve months and the change recorded between July and August 2024.

Overall, there are 1,720 claimants in East Lothian in August 2024, and this is 12.4% higher than a year ago and 3% higher than last month. From the table we can see that over the last 12 months five wards have seen the claimant count increase by between 8.2% and 20.3% and between July 2024 and August 2024 five of the six wards have seen an increase. One thing to remember is that numbers are often *relatively* small so a large percentage change can be the result of 20 additional claimants. The claimant rate ranges from 1.3% of 16-64 year olds claiming in North Berwick Coastal through to 3.6% in Musselburgh.

**Table 13 East Lothian Claimant Count by Ward August 2024**

Wards	August 2024	Rate	% Change		Proportion of Claimants August 2024				
			Aug23 to Aug24	Jul24 to Aug24	Male	Female	Aged 16-24	Aged 25-49	Aged 50+
Dunbar and East Linton	195	2.1	18.2%	-4.9%	56.4%	41.0%	15.4%	56.4%	28.2%
Haddington and Lammermuir	270	2.3	17.4%	8.0%	53.7%	46.3%	14.8%	61.1%	24.1%
Musselburgh	445	3.6	20.3%	3.5%	55.1%	44.9%	16.9%	60.7%	23.6%
North Berwick Coastal	100	1.3	-4.8%	11.1%	45.0%	55.0%	10.0%	60.0%	30.0%
Preston, Seton and Gosford	265	2.4	8.2%	8.2%	50.9%	49.1%	18.9%	56.6%	24.5%
Tranent, Wallyford and Macmerry	450	3.1	8.4%	1.1%	51.1%	48.9%	21.1%	57.8%	21.1%
East Lothian	1,720	2.6	12.4%	3.0%	53.2%	46.8%	17.4%	58.7%	23.8%

**Source: NOMIS 10/9/2024**

Across the county 53.2% of claimants are male and this varies from 45% in North Berwick Coastal to 56.4% in Dunbar and East Linton. Tranent Wallyford and Macmerry has the highest proportion of 16-24 year old claimants (21.1%). North Berwick Coastal has the highest proportion (30%) of over 50 year olds.

Table 14 looks at those claiming Universal Credit in East Lothian who are in work and presents the results by ward. Overall, there has been an increase between July 2023 and July 2024 of 6.9%. This ranges from a 13.0% increase in working Universal Credit claimants in Dunbar and East Linton (around 60 additional claimants over the year) to a fall of 1.7% in North Berwick Coastal. Between June 2024 and July 2024, the count fell by 3.2% in the County and only all East Lothian wards saw the number of in work claimants fall.

**Table 14 In Work Universal Credit Claimant Count by East Lothian Ward July 2024**

	Jul-23	Jun-24	Jul-24	Jul 23 to Jul 24	Jun 24 to Jul 24
Dunbar and East Linton	453	526	512	13.0%	-2.7%
Haddington and Lammermuir	529	622	588	11.2%	-5.5%
Musselburgh	766	853	837	9.3%	-1.9%
North Berwick Coastal	242	246	238	-1.7%	-3.3%
Preston, Seton and Gosford	604	652	633	4.8%	-2.9%
Tranent, Wallyford and Macmerry	918	983	954	3.9%	-3.0%
Total	3,514	3,881	3,757	6.9%	-3.2%

**Source: StatXplore 11/9/2024**

### *Fife*

Turning now to look at Fife. Table 15 gives the current situation in the twenty two Fife wards, the percentage change over the last twelve months and the change recorded between July and August 2024.

Overall, there are 8,135 claimants in Fife in August 2024, and this is 4.0% higher than a year ago and 1.2% higher than last month. From the table we can see that over the last 12 months six wards have seen the claimant count fall by between 1.3% and 8.2%. Between July and August 2024 13 of the 22 wards in the Kingdom saw the claimant count increase. This ranged from a 0.8% increase in Kirkcaldy Central through to a 11.8% increase in St Andrews.

**Table 15 Fife Claimant Count by Ward August 2024**

Wards	August 2024	Rate	% Change		Proportion of Claimants Aug24				
			Aug23 to Aug24	Jul24 to Aug24	Male	Female	Aged 16-24	Aged 25-49	Aged 50+
Buckhaven, Methil and Wemyss Villages	715	6.5	-3.4%	-2.7%	60.8%	39.2%	23.8%	53.8%	23.1%
Burntisland, Kinghorn and Western Kirkcaldy	350	3.9	11.1%	1.4%	58.6%	41.4%	18.6%	54.3%	27.1%
Cowdenbeath	540	3.9	5.9%	0.0%	56.5%	42.6%	24.1%	58.3%	17.6%
Cupar	210	2.5	10.5%	10.5%	54.8%	45.2%	14.3%	59.5%	23.8%
Dunfermline Central	365	3.1	1.4%	0.0%	53.4%	46.6%	21.9%	56.2%	21.9%
Dunfermline North	335	3.1	11.7%	6.3%	56.7%	43.3%	20.9%	55.2%	23.9%
Dunfermline South	400	2.6	0.0%	3.9%	55.0%	45.0%	20.0%	57.5%	22.5%
East Neuk and Landward	180	2.6	-2.7%	5.9%	50.0%	50.0%	11.1%	55.6%	33.3%
Glenrothes Central and Thornton	370	3.9	4.2%	5.7%	55.4%	44.6%	25.7%	58.1%	16.2%
Glenrothes North, Leslie and Markinch	345	3.0	16.9%	-1.4%	59.4%	40.6%	21.7%	58.0%	18.8%
Glenrothes West and Kinglassie	350	3.6	0.0%	2.9%	50.0%	50.0%	21.4%	55.7%	21.4%
Howe of Fife & Tay Coast	200	2.5	11.1%	5.3%	50.0%	50.0%	20.0%	50.0%	30.0%
Inverkeithing & Dalgety Bay	225	2.1	-8.2%	7.1%	48.9%	51.1%	20.0%	55.6%	24.4%
Kirkcaldy Central	645	7.5	0.8%	0.8%	56.6%	42.6%	17.8%	58.1%	24.0%
Kirkcaldy East	630	6.8	5.9%	2.4%	61.9%	38.1%	21.4%	59.5%	19.0%
Kirkcaldy North	380	3.9	5.6%	-1.3%	55.3%	44.7%	22.4%	59.2%	19.7%
Leven, Kennoway and Largo	390	3.3	-1.3%	0.0%	59.0%	41.0%	20.5%	56.4%	23.1%
Lochgelly, Cardenden and Benarty	600	5.2	4.3%	-3.2%	56.7%	44.2%	23.3%	57.5%	19.2%
Rosyth	280	2.7	5.7%	0.0%	50.0%	50.0%	16.1%	64.3%	19.6%

St Andrews	95	0.6	-5.0%	11.8%	47.4%	47.4%	15.8%	52.6%	31.6%
Tay Bridgehead	260	2.7	52.9%	10.6%	51.9%	48.1%	17.3%	61.5%	21.2%
West Fife & Coastal Villages	280	2.9	-5.1%	-5.1%	53.6%	46.4%	23.2%	58.9%	17.9%
Fife	8,135	3.5	4.0%	1.2%	56.0%	44.0%	20.9%	57.3%	21.9%

**Source: NOMIS 10/9/2024**

Kirkcaldy East had the highest proportion of male claimants (61.9%) whilst Inverkeithing and Dalgety Bay had 51.1% of claimants recording as female. With 25.7% of claimants being aged 16-24 Glenrothes Central and Thornton has the highest proportion of this age group in Fife. In East Neuk and Landward 33.3% of the 180 claimants are over 50 years of age.

Table 16, below, looks at the in-work Universal Credit claimant numbers for the wards in Fife. Overall, there were 14,550 Fife residents working and claiming Universal Credit support in July 2024 which is 12.2% higher than in July 2023 and much the same as it was last month. Again, there are people needing this support across the Kingdom with every ward other than St Andrews recording over 300 claimants. Three wards, Buckhaven, Methil and Wemyss Villages, Cowdenbeath and Lochgelly, Cardenden and Benarty both had over 1,000 people working but requiring Universal Credit support to supplement their income.

**Table 16 In Work Universal Credit Claimant Count by Fife Ward July 2024**

	Jul-23	Jun-24	Jul-24	Jul 23 to Jul 24	Jun 24 to Jul 24
Buckhaven, Methil and Wemyss Villages	1,019	1,084	1,080	6.0%	-0.4%
Burntisland, Kinghorn and Western Kirkcaldy	410	444	456	11.2%	2.7%
Cowdenbeath	864	1,010	1,008	16.7%	-0.2%
Cupar	393	433	426	8.4%	-1.6%
Dunfermline Central	598	696	676	13.0%	-2.9%
Dunfermline North	491	538	541	10.2%	0.6%
Dunfermline South	724	798	816	12.7%	2.3%
East Neuk and Landward	334	385	371	11.1%	-3.6%
Glenrothes Central and Thornton	691	781	757	9.6%	-3.1%
Glenrothes North, Leslie and Markinch	590	698	706	19.7%	1.1%
Glenrothes West and Kinglassie	710	803	807	13.7%	0.5%
Howe of Fife and Tay Coast	303	347	340	12.2%	-2.0%
Inverkeithing and Dalgety Bay	406	443	443	9.1%	0.0%
Kirkcaldy Central	733	819	807	10.1%	-1.5%
Kirkcaldy East	757	829	847	11.9%	2.2%
Kirkcaldy North	568	701	711	25.2%	1.4%
Leven, Kennoway and Largo	669	715	702	4.9%	-1.8%
Lochgelly, Cardenden and Benarty	999	1,093	1,109	11.0%	1.5%
Rosyth	632	709	703	11.2%	-0.8%
St. Andrews	165	175	173	4.8%	-1.1%
Tay Bridgehead	380	453	452	18.9%	-0.2%
West Fife and Coastal Villages	547	610	618	13.0%	1.3%
Total	12972	14554	14550	12.2%	0.0%

**Source: StatXplore 11/9/2024**

## Midlothian

Turning now to look at Midlothian. Table 17 gives the current situation in the six Midlothian wards, the percentage change over the last twelve months and the change recorded between July and August 2024.

Overall, we can see that Midlothian had 1,390 claimants in August 2024 and has seen the claimant increase by 3.3% year on year and has fallen by 0.4% between July and August 2024. Looking at the wards it is apparent that over the course of the year two wards saw a fall in the claimant count and the others recorded an increase. Over the last month three wards recorded a fall, and three recorded an increase.

**Table 17 Midlothian Claimant Count by Ward August 2024**

Wards	August 2024	Rate	% Change		Proportion of Claimants August 2024				
			Aug23 to Aug24	Jul24 to Aug24	Male	Female	Aged 16-24	Aged 25-49	Aged 50+
Bonnyrigg	215	1.8	4.9%	-2.3%	53.5%	44.2%	18.6%	65.1%	14.0%
Dalkeith	275	3.0	-1.8%	5.8%	56.4%	43.6%	20.0%	63.6%	16.4%
Midlothian East	245	2.5	6.5%	-2.0%	51.0%	46.9%	22.4%	59.2%	18.4%
Midlothian South	220	2.5	-8.3%	2.3%	52.3%	47.7%	22.7%	63.6%	15.9%
Midlothian West	240	2.4	14.3%	4.3%	54.2%	45.8%	12.5%	58.3%	27.1%
Penicuik	200	2.5	8.1%	-9.1%	60.0%	40.0%	20.0%	60.0%	22.5%
Midlothian	1,390	2.4	3.3%	-0.4%	55.0%	45.0%	19.4%	61.9%	19.1%

**Source: NOMIS 10/9/2024**

We can see that overall, in Midlothian 55% of claimants are male, 19.4% are aged 16-24 and 19.1% are 50 or over. Looking at the wards themselves we can see that Penicuik had the highest proportion of male claimants (60%) and Midlothian South the highest proportion of female claimants (47.7%). In terms of the age profile 22.7% of claimants in Midlothian South were 16-24 years of age in August 2024. We can also see that 27.1% of claimants in Midlothian West were over the age of 50.

Table 18 looks at the number of in work Universal Credit claimants in the 6 Midlothian wards. We can see that overall, there are 3,611 claimants in Midlothian in July 2024. This is 12.1% higher than in July 2023 and 0.7% lower than a month ago. All six wards saw a year on year increase ranging from a 14.9% increase in Penicuik to 9.5% increase in Dalkeith. Over the last month there has been a fall in the number of in work claimants in five of the Midlothian wards and only Midlothian South recorded a month to month increase.

**Table 18 In Work Universal Credit Claimant Count by Midlothian Ward July 2024**

	Jul-23	Jun-24	Jul-24	Jul 23 to Jul 24	Jun 24 to Jul 24
Bonnyrigg	535	606	598	11.8%	-1.3%
Dalkeith	587	645	643	9.5%	-0.3%
Midlothian East	555	639	632	13.9%	-1.1%
Midlothian South	642	708	710	10.6%	0.3%
Midlothian West	450	515	513	14.0%	-0.4%
Penicuik	451	524	518	14.9%	-1.1%
Total	3,220	3,636	3,611	12.1%	-0.7%

**Source: StatXplore 11/9/2024**

## West Lothian

The situation in West Lothian is looked at in Table 19 below. Overall, there were 3,280 claimants in West Lothian in August 2024, and this is 2.7% more than a year ago and 1.1% lower than a month

ago. Four wards recorded a month to month fall between July and August 2024 and this ranged from 1.25% fall in Livingston South through to a 5.7% fall between July and August in Bathgate.

**Table 19 West Lothian Claimant Count by Ward August 2024**

Wards	August 2024	Rate	% Change		Proportion of Claimants Aug 2024				
			Aug23 to Aug24	Jul24 to Aug24	Male	Female	Aged 16-24	Aged 25-49	Aged 50+
Armadaled & Blackridge	290	2.9	-3.3%	1.8%	58.6%	41.4%	24.1%	56.9%	19.0%
Bathgate	410	2.6	-9.9%	-5.7%	56.1%	43.9%	22.0%	59.8%	18.3%
Broxburn, Uphall and Winchburgh	325	2.6	-1.5%	-3.0%	55.4%	44.6%	21.5%	53.8%	26.2%
East Livingston & E. Calder	395	2.7	6.8%	1.3%	50.6%	49.4%	17.7%	64.6%	17.7%
Fauldhouse and the Breich Valley	375	3.7	-1.3%	2.7%	64.0%	36.0%	20.0%	65.3%	14.7%
Linlithgow	140	1.4	27.3%	0.0%	53.6%	42.9%	17.9%	50.0%	32.1%
Livingston North	360	2.4	24.1%	1.4%	50.0%	50.0%	19.4%	59.7%	20.8%
Livingston South	425	2.7	1.2%	-1.2%	55.3%	44.7%	18.8%	62.4%	18.8%
Whitburn & Blackburn	560	4.0	1.8%	-3.4%	53.6%	46.4%	19.6%	59.8%	19.6%
West Lothian	3,280	2.8	2.7%	-1.1%	55.2%	44.8%	20.1%	60.1%	19.8%

**Source: NOMIS 10/9/2024**

Overall, we can see that 55.2% of claimants in West Lothian are male whilst in Fauldhouse and the Breich Valley 64% of claimants are male. In West Lothian overall 20.1% of claimants are 16-24 years of age and the ward with the highest proportion of these younger claimants is Armadale and Blackridge where 24.1% are 16-24 years of age. Whilst 19.8% of claimants in West Lothian are 50 years of age or over this is a lot higher in Linlithgow where 32.1% of all claimants are 50 or over.

**Table 20 In Work Universal Credit Claimant Count by West Lothian Ward July 2024**

	Jul-23	Jun-24	Jul-24	Jul 23 to Jul 24	Jun 24 to Jul 24
Armadaled and Blackridge	513	608	590	15.0%	-3.0%
Bathgate	757	933	893	18.0%	-4.3%
Broxburn, Uphall and Winchburgh	658	778	783	19.0%	0.6%
East Livingston and East Calder	797	937	924	15.9%	-1.4%
Fauldhouse and the Breich Valley	662	763	742	12.1%	-2.8%
Linlithgow	223	264	275	23.3%	4.2%
Livingston North	641	805	806	25.7%	0.1%
Livingston South	862	1,008	1,008	16.9%	0.0%
Whitburn and Blackburn	1,050	1,154	1,146	9.1%	-0.7%
Total	6,162	7,253	7,177	16.5%	-1.0%

**Source: StatXplore 11/9/2024**

Table 20 indicates that across West Lothian in July 2024 there were 7,137 individuals working and claiming Universal Credit which is 16.5% higher than a year ago but 1.0% lower than in June. We can also see that only two wards have over 1,000 working Universal Credit claimants and apart from Linlithgow every ward has over 500 people working and relying on Universal Credit.

### Scottish Borders

Turning now to look at Scottish Borders. Table 21 gives the current situation in the eleven Scottish Borders wards, the percentage change over the last twelve months and the change recorded

between July and August 2024. From this table we can see that there were 2,205 people claiming in August which is almost the same as recorded in July. Whilst it is almost the same as last month it is 11.1% higher than in August 2023. We can see that only two wards recorded a year on year fall and three wards have recorded a fall in the claimant count between July and August 2024

With respect to the claimant rate, we can see that this ranges from 2.2% of 16-64 year olds in Tweeddale West through to 4.7% of 16-64 year olds in Hawick and Denholm.

**Table 21 Scottish Borders Claimant Count by Ward August 2024**

Wards	August 2024	Rate	% Change		Proportion of Claimants Aug 2024				
			Aug23 to Aug24	Jul24 to Aug24	Male	Female	Aged 16-24	Aged 25-49	Aged 50+
E. Berwickshire	185	3.1	5.7%	-7.5%	43.2%	56.8%	13.5%	54.1%	32.4%
Galashiels and District	375	3.8	0.0%	2.7%	60.0%	40.0%	18.7%	53.3%	26.7%
Hawick and Denholm	250	4.7	-2.0%	0.0%	56.0%	44.0%	20.0%	56.0%	24.0%
Hawick and Hermitage	220	4.4	15.8%	-4.3%	59.1%	38.6%	25.0%	45.5%	29.5%
Jedburgh and District	185	3.6	15.6%	5.7%	51.4%	48.6%	21.6%	54.1%	27.0%
Kelso and District	180	3.2	12.5%	2.9%	47.2%	52.8%	11.1%	58.3%	30.6%
Leaderdale & Melrose	165	2.6	32.0%	6.5%	48.5%	54.5%	15.2%	69.7%	18.2%
Mid Berwickshire	190	3.1	18.8%	-5.0%	50.0%	50.0%	18.4%	44.7%	36.8%
Selkirkshire	175	3.2	20.7%	0.0%	54.3%	45.7%	17.1%	57.1%	25.7%
Tweeddale East	145	2.3	31.8%	3.6%	48.3%	51.7%	17.2%	51.7%	34.5%
Tweeddale West	135	2.2	-3.6%	0.0%	59.3%	40.7%	11.1%	51.9%	37.0%
Scottish Borders	2,205	3.3	11.1%	0.7%	53.3%	46.7%	17.5%	53.7%	28.8%

**Source: NOMIS 10/9/2024**

The data in Table 21 also indicates that 53.3% of claimants were male, 17.5% were 16-24 years of age and 28.8% were over 50 years of age. In Galashiels and District 60% of claimants were males, in East Berwickshire 56.8% were females. In terms of age cohorts 25% of claimants in Hawick and Hermitage were 16-24 years of age and in Mid Berwickshire 36.8% of claimants were fifty or over.

**Table 22 In Work Universal Credit Claimant Count by Scottish Borders Ward July 2024**

	Jul-23	Jun-24	Jul-24	Jul23 to July 24	June24 to July 24
East Berwickshire	366	453	442	20.8%	-2.4%
Galashiels and District	576	610	599	4.0%	-1.8%
Hawick and Denholm	383	450	426	11.2%	-5.3%
Hawick and Hermitage	286	313	319	11.5%	1.9%
Jedburgh and District	225	280	271	20.4%	-3.2%
Kelso and District	291	366	361	24.1%	-1.4%
Leaderdale and Melrose	306	390	391	27.8%	0.3%
Mid Berwickshire	350	389	381	8.9%	-2.1%
Selkirkshire	271	331	315	16.2%	-4.8%
Tweeddale East	207	264	268	29.5%	1.5%
Tweeddale West	225	267	252	12.0%	-5.6%
Total	3,483	4,106	4,023	15.5%	-2.0%

**Source: StatXplore 11/9/2024**



Table 22 looks at the number of people in work and claiming Universal Credit in Scottish Borders. In July 2024 there were 4,023 people working who needed the support of Universal Credit. This is 15.5% higher than a year ago and 2.0% lower than last month. Only one ward, Galashiels and District, has over 500 people working and claiming Universal Credit. We can see that only three wards saw the claimant count for in work support increase between June and July and the others saw it fall by between 1.4% (Kelso and District) to 5.6% (Tweeddale West).

### Economic Activity School Leaver Destinations

The following section is based on economic activity rather than claimant count and the data underpinning it is derived from surveys. As a result, it can have margins of error and these margins of error can be considerable, particularly at a local level or when used to report on specific demographic groups.

Table 23 looks at the most recent data that can be broken down by Local Authority. It is based on twelve months survey data so reflects the position as of March 2024. **This is the same data as the August report as it has not been updated on NOMIS.**

**Table 23 Economic activity aged 16-64 (April 2023- March 2024)**

	Economic activity rate - aged 16-64		% who are economically inactive - aged 16-64		% of economically inactive who want a job	
	numerator	percent	numerator	percent	numerator	percent
City of Edinburgh	302,400	84.0	57,600	16.0	10,100	17.5
East Lothian	53,200	81.0	12,500	19.0	1,700	13.8
Fife	176,500	78.1	49,600	21.9	13,400	26.9
Midlothian	48,600	85.2	8,500	14.8	1,700	20.6
Scottish Borders	52,100	77.8	14,800	22.2	2,700	17.9
West Lothian	87,800	74.9	29,400	25.1	4,500	15.2
Column Total	720,700	80.7	172,400	19.3	34,000	19.8

**Source: NOMIS 19/7/2024**

It gives the economic activity rate in all six authorities and, of those that are economically inactive in each authority, the proportion and number who want a job. We can see that this suggests that across the Region 80.7% of those aged between 16-64 were economically active. Of the 172,400 who were recorded as economically inactive the survey indicates that around 34,000 would want a job.

It is worth noting that Economically Active includes in employment and those claiming an out of work benefit. Economically inactive are the more difficult to pinpoint group. So, if the estimates are correct these would be in addition to the claimant count figures looked at elsewhere in this report but can include groups who are not looking for work as they are studying, have health issues or looking after family.

The caveat with these statistics is that as it is a survey there are confidence limits provided with the data. This indicates the number which the statisticians are 95% confident would be correct if the survey had spoken to every eligible individual. For example, whilst the economic activity rate for Edinburgh is 84%, they are 95% confident that the real figure, based on the whole population, would be between 81.5% and 87.5% - the confidence levels recorded.

## Annual Participation Measure

In August Skills Development Scotland published their most recent Annual Participation Measure.<sup>2</sup> This measure gives an indication of how many young people are in a positive destination after leaving school. The data set used to compile the report combines data from a range of sources including:

- Local Authorities
- Colleges
- Department of Work and Pensions
- Students Awards Agency Scotland
- HMRC (added in 2023)

Even though the partners providing information are able to identify a high percentage of young people there are always some 16-19 year olds who aren't included as none of the official agencies are able to identify what they are doing. Also worth considering is that CSS (the Skills Development Scotland data base on which the Annual Population Measure is based) does not include;

- Those attending an independent school or being home schooled.
- Individuals who migrated into Scotland for study or work with no record of publicly funded schooling in Scotland.

The Annual Participation Measure gives a picture of what 16-19 years olds were doing between 1/4/2023 and 31/3/2024. Table 24 below looks at the percentage of 16-19 year olds who left school in 23/24 by their destination. We can see that across the region education is the most frequently cited outcome for school leavers but there are difference with 75% of the cohort in Edinburgh recording Education and 64% in Midlothian. We can also see that in Edinburgh only 16% go into employment and it is 28% in Midlothian. The percentage of young people who were unemployed and seeking work is low and there is an additional percentage of young people where no information is forthcoming and have an unconfirmed status.

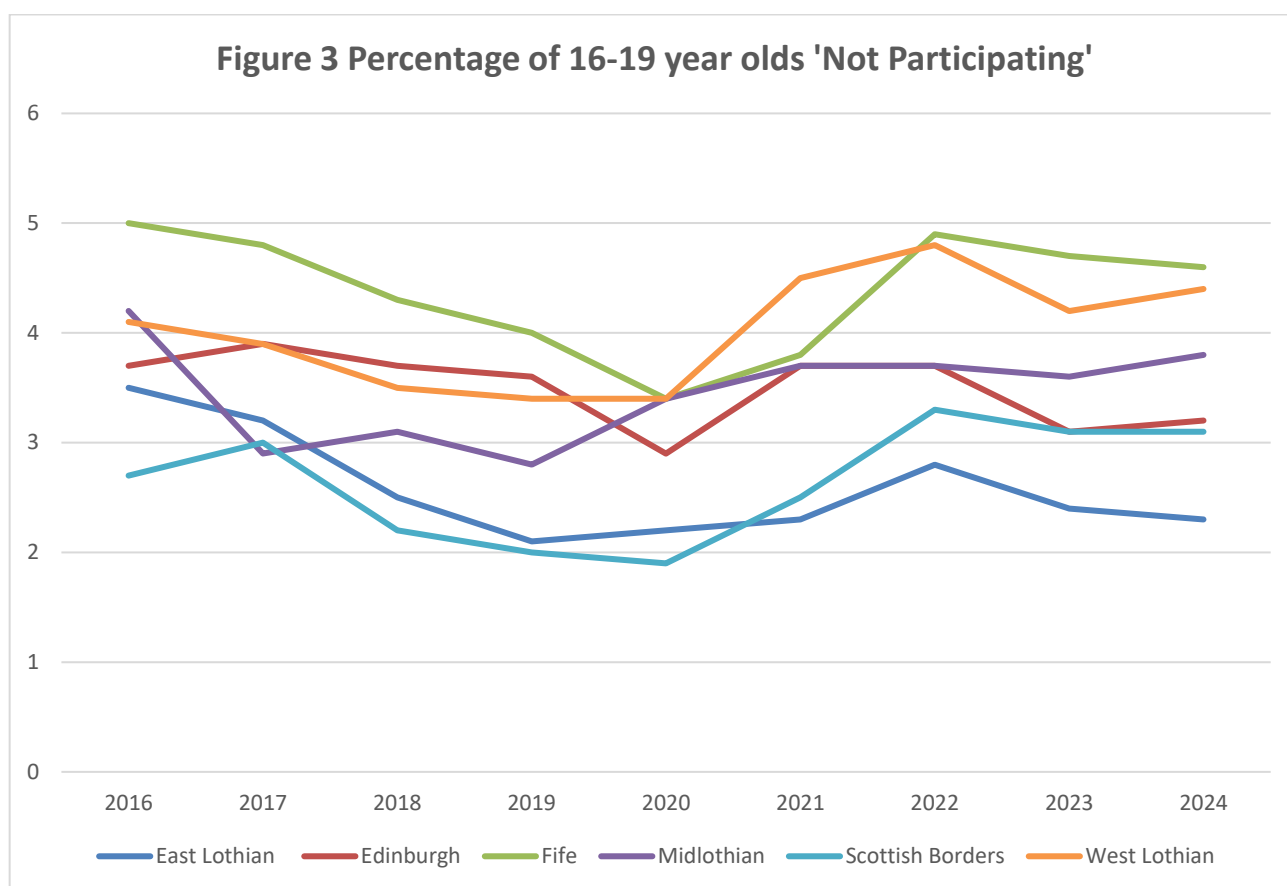
**Table 24 Annual Participation Measure (April 2023- March 2024)**

2024	East Lothian	Edinburgh	Fife	Midlothian	Scottish Borders	West Lothian
In Education	68%	75%	68%	64%	67%	70%
In Employment	24%	16%	21%	28%	25%	21%
In Other Training and Development	3%	2%	2%	2%	2%	2%
Unemployed Seeking Work	1%	1%	2%	2%	2%	2%
Unemployed Not Seeking Work	1%	2%	2%	2%	1%	2%
Unconfirmed Status	3%	3%	5%	2%	3%	3%
Total Cohort	4,612	15,041	16,001	4,058	4,786	8,825

**Source: SDS 11/9/2024**

Figure 3 below highlights the percentage of each cohort that has a designation of not participating- they are either unemployed seeking work or unemployed and not seeking work. What we can see is that there isn't that much change year to year with one exception. Around 2020 or 2021 there was an increase in the number of young people seen as 'not participating'. This would be around the time of the pandemic, and it is likely to have played a part in reducing the positive options available to young people. To put it in context the percentage of young people Not Participating increased from 2.9% in 2020 to 3.7% in 2021 in Edinburgh, 1.9% to 2.5% in Scottish Borders and 3.4% to 4.5% in West Lothian.

<sup>2</sup> [https://www.skillsdevelopmentscotland.co.uk/publications-statistics/statistics/annual-participation-measure?\\_gl=1\\*xrohae\\*\\_up\\*MQ.\\*\\_ga\\*MTY4MjY4MDQyMy4xNzI2MDU5NDk0\\*\\_ga\\_2CRJE0HKFQ\\*MTcyNjA1OTQ5Mi4xLjEuMTcyNjA1OTQ5Ni4wLjAuMA..](https://www.skillsdevelopmentscotland.co.uk/publications-statistics/statistics/annual-participation-measure?_gl=1*xrohae*_up*MQ.*_ga*MTY4MjY4MDQyMy4xNzI2MDU5NDk0*_ga_2CRJE0HKFQ*MTcyNjA1OTQ5Mi4xLjEuMTcyNjA1OTQ5Ni4wLjAuMA..)



**Source: SDS 11/9/2024**

Chris Nicol, Business Intelligence Manager,  
Capital City Partnership  
18/9/2024

07462 432348  
[chris.nicol@capitalcitypartnership.org](mailto:chris.nicol@capitalcitypartnership.org)